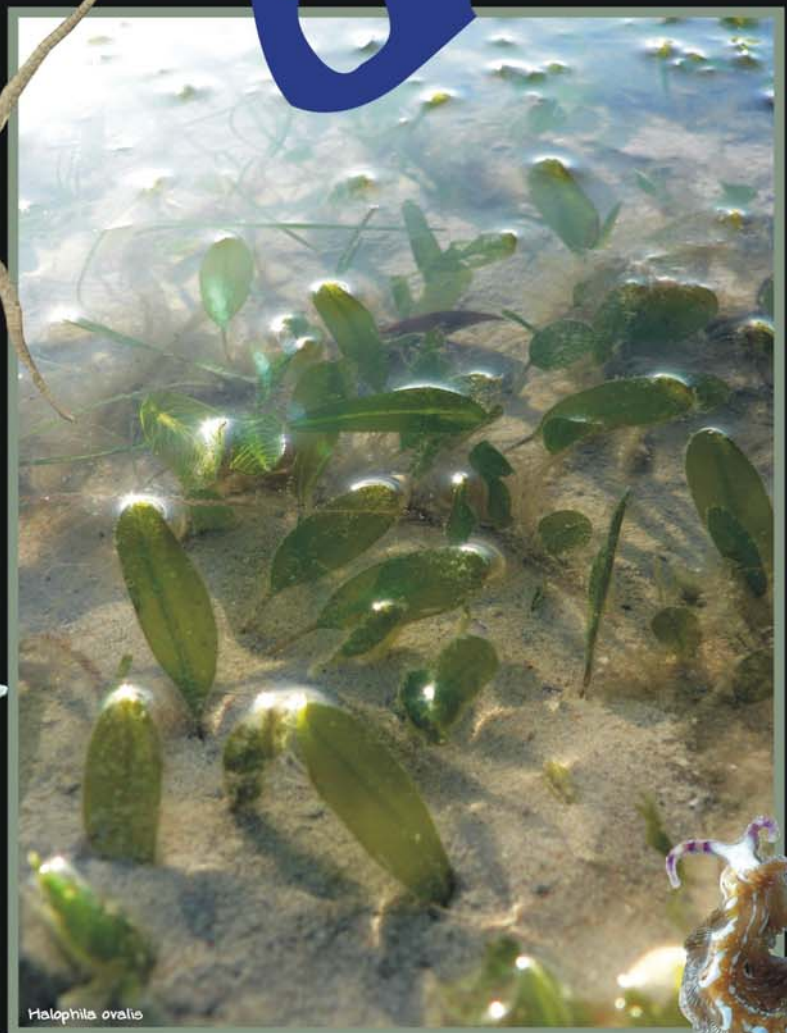


seagrass

BROOME
Western Australia

ecosystem **biodiverse.** shelter food life



Seagrass is a marine plant which grows much like terrestrial grass. It is often found in shallow coastal waters. At least two species grow on the Roebuck Bay mudflats in Broome.

nursery coastal marine dynamic



Seagrass is the primary food source for Green Turtles and dugongs. Dugongs can eat 30-40kg of seagrass each day! Feeding trails and furrows can be seen in the seagrass beds.



Detritus, formed by the breakdown of seagrass, supports a complex marine food chain which sustains a myriad of fascinating & beautiful marine creatures.



The Broome Community Seagrass Monitoring Project is supported by:



Save the Nature of the Kimberley
envions
KIMBERLEY
INC



Department of Environment and Conservation

