



Specimen #: SW285

Species: *Zostera capricorni*

Collector: R Yoshida 13/07/2007

Location: Whitsundays, Pioneer Bay (P12)

Latitude: 20° 16.1748 S **Longitude:** 148° 41.5878 E

Depth: 0m **Sediment:** Mud/F.Sand **% cover:** 30

Other spp: *H. ovalis* *H. uninervis*

Flowers: 0 **Fruit:** 0

Comments:



Specimen #: SW285a

Species: *Zostera capricorni*

Collector: R Yoshida 13/07/2007

Location: Whitsundays, Pioneer Bay (PI2)

Latitude: 20° 16.1748 S **Longitude:** 148° 41.5878 E

Depth: 0m **Sediment:** Mud/F.Sand **% cover:** 30

Other spp: *H. ovalis* *H. uninervis*

Flowers: 0 **Fruit:** 0

Comments: Press by Jennifer Wenzler



Specimen #: SW285b

Species: *Zostera capricorni*

Collector: R Yoshida 13/07/2007

Location: Whitsundays, Pioneer Bay (PI2)

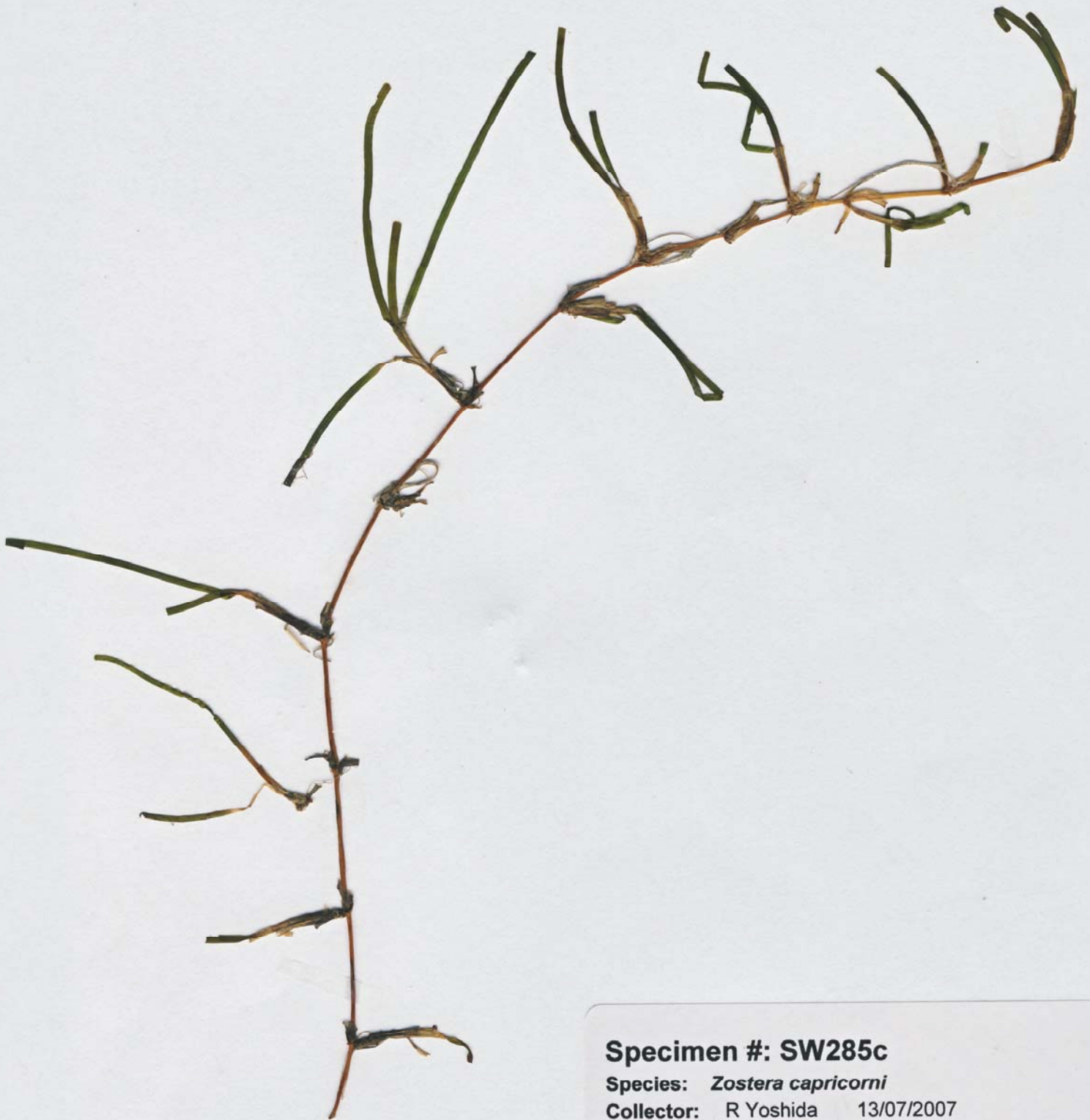
Latitude: 20° 16.1748 S **Longitude:** 148° 41.5878 E

Depth: 0m **Sediment:** Mud/F.Sand **% cover:** 30

Other spp: *H. ovalis* *H. uninervis*

Flowers: 0 **Fruit:** 0

Comments: Press by J Williams



Specimen #: SW285c

Species: *Zostera capricorni*

Collector: R Yoshida 13/07/2007

Location: Whitsundays, Pioneer Bay (PI2)

Latitude: 20° 16.1748 S **Longitude:** 148° 41.5878 E

Depth: 0m **Sediment:** Mud/F.Sand **% cover:** 30

Other spp: *H. ovalis* *H. uninervis*

Flowers: 0 **Fruit:** 0

Comments: Press by Lauren Buckley