

DATE: 13-3-92. (213)

COLLECTOR: NFC W. LEE LONG

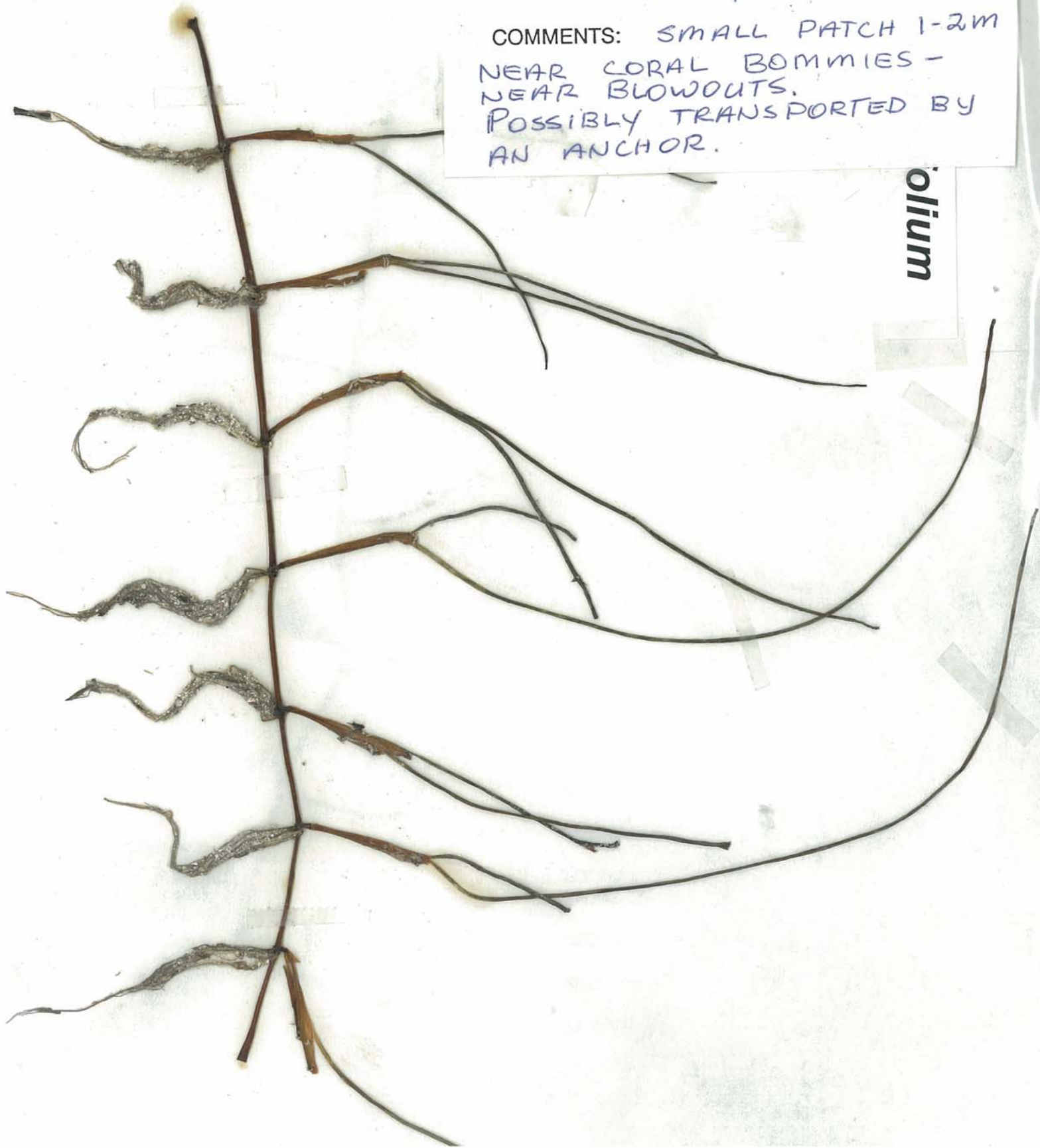
LOCATION: GREEN ISLAND.
LAT&LONG: NORTH WEST BED.

DEPTH: 2.5m

SPECIES: SYRINGODIUM ISOETIFOLIUM

SUBSTRATE: SAND/SHELL

COMMENTS: SMALL PATCH 1-2M
NEAR CORAL BOMMIES -
NEAR BLOWOUTS.
POSSIBLY TRANSPORTED BY
AN ANCHOR.



olium