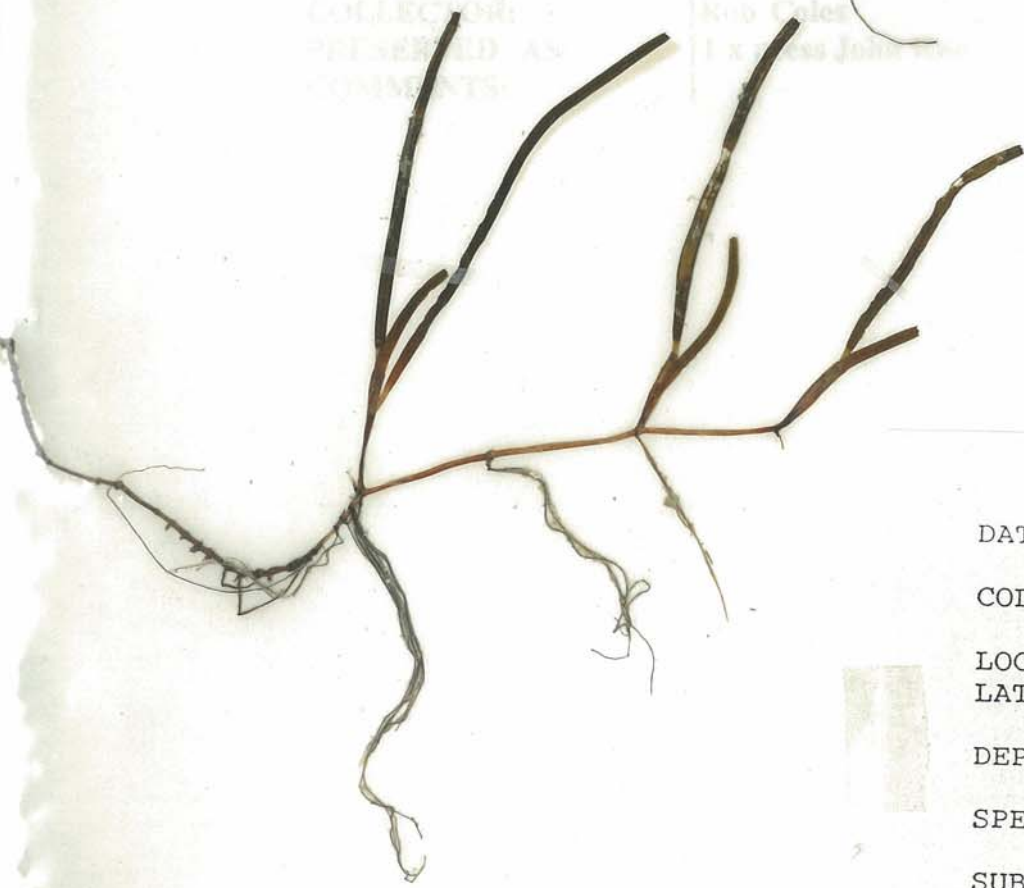


1240

126  
*Halophila ovata*  
 18/09/89  
 Lookout Point (18, 121)  
 14°48'S 145°05'E  
 9m  
 mud  
 1 x 1 m  
 Rob Coles  
 1 x 1 m



DATE: 18-9-89  
 LOCALITY: Pethebridge Is.  
 12

DATE: 18-9-89  
 COLLECTOR: NFRC Rob Coles 124  
 LOCATION: Pethebridge Island  
 LAT&LONG: 14°48'S 145°10'E  
 DEPTH: 9.0m  
 SPECIES: *Halodule uninervis* (wide)  
 SUBSTRATE: Mud/sand  
 COMMENTS: < 1% cover  
 Site: 18.3