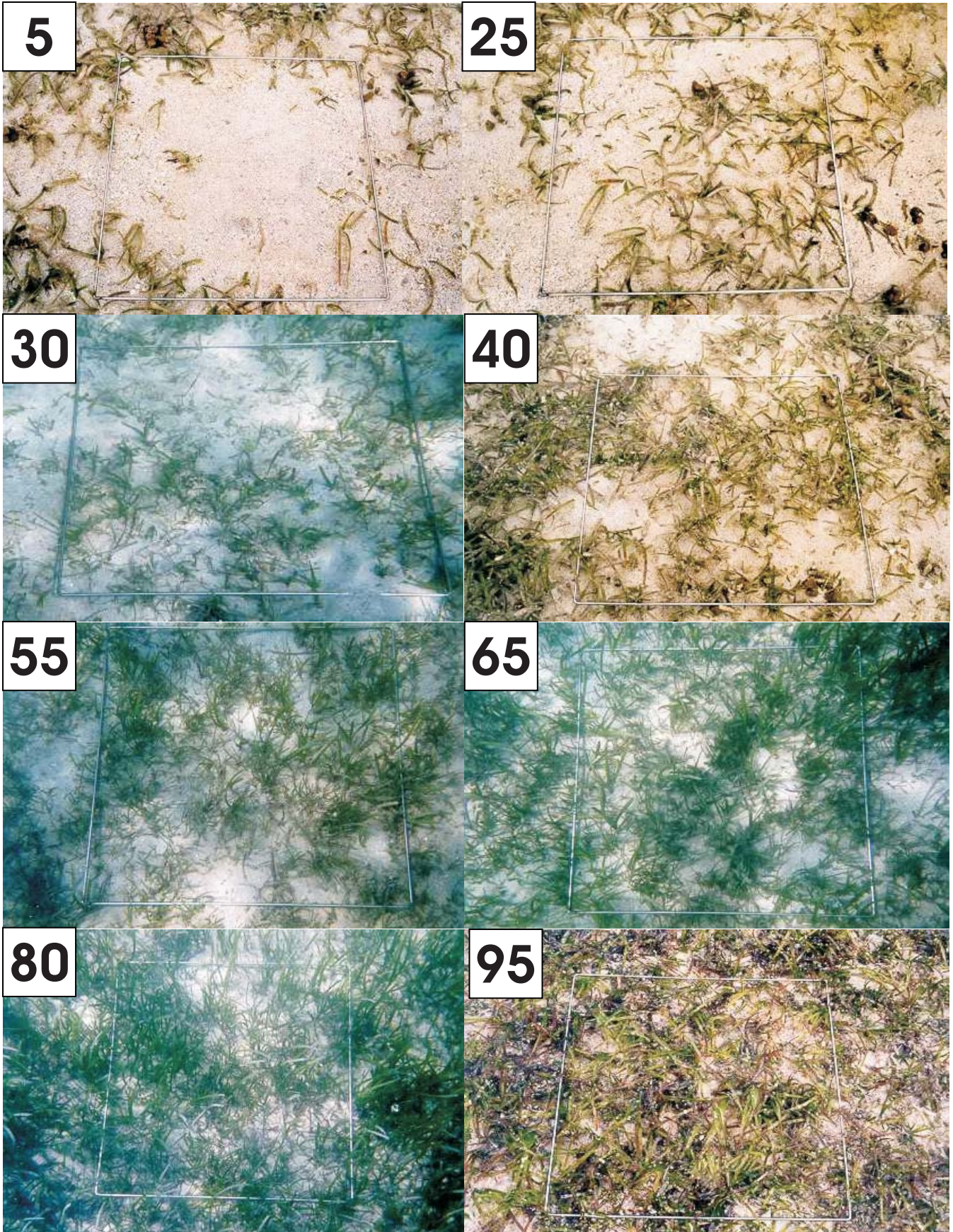


Seagrass Percentage Cover



SEAGRASS SPECIES CODES

Ho Halophila ovalis

12 or more cross veins
No hairs on leaf surface

Ea Enhalus acoroides

Very long ribbon-like leaves with inrolled leaf margins

Thick rhizome with long black bristles and cord-like roots
Leaves 30-150 cm long

Th

Thalassia hemprichii

Short black bars of tannin cells on leaf
Thick rhizome with scars between shoots
"Sickle" shaped leaves
Leaves 10-40 cm long



Hu

Halodule uninervis

trident leaf tip
1 central vein
Usually pale rhizome, with clean black leaf scars



Hp

Halodule pinifolia

rounded leaf tip
1 central vein
Usually pale rhizome, with clean black leaf scars



Cr Cymodocea rotundata

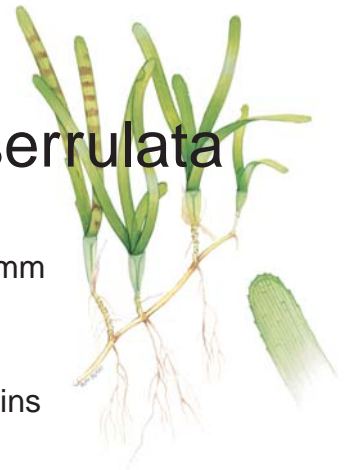
Rounded leaf tip
Narrow leaf blade (2-4mm wide)
Leaves 7-15 cm long
9-15 longitudinal veins
Well developed leaf sheath



Cs

Cymodocea serrulata

Serrated leaf tip
Wide leaf blade (5-9mm wide)
Leaves 6-15cm long
13-17 longitudinal veins



Si

Syringodium isoetifolium

Cylindrical in cross section
Leaf tip tapers to a point
Leaves 7-30cm long



Hm

Halophila minor

Less than 12 pairs of cross veins
Small oval leaf blade

