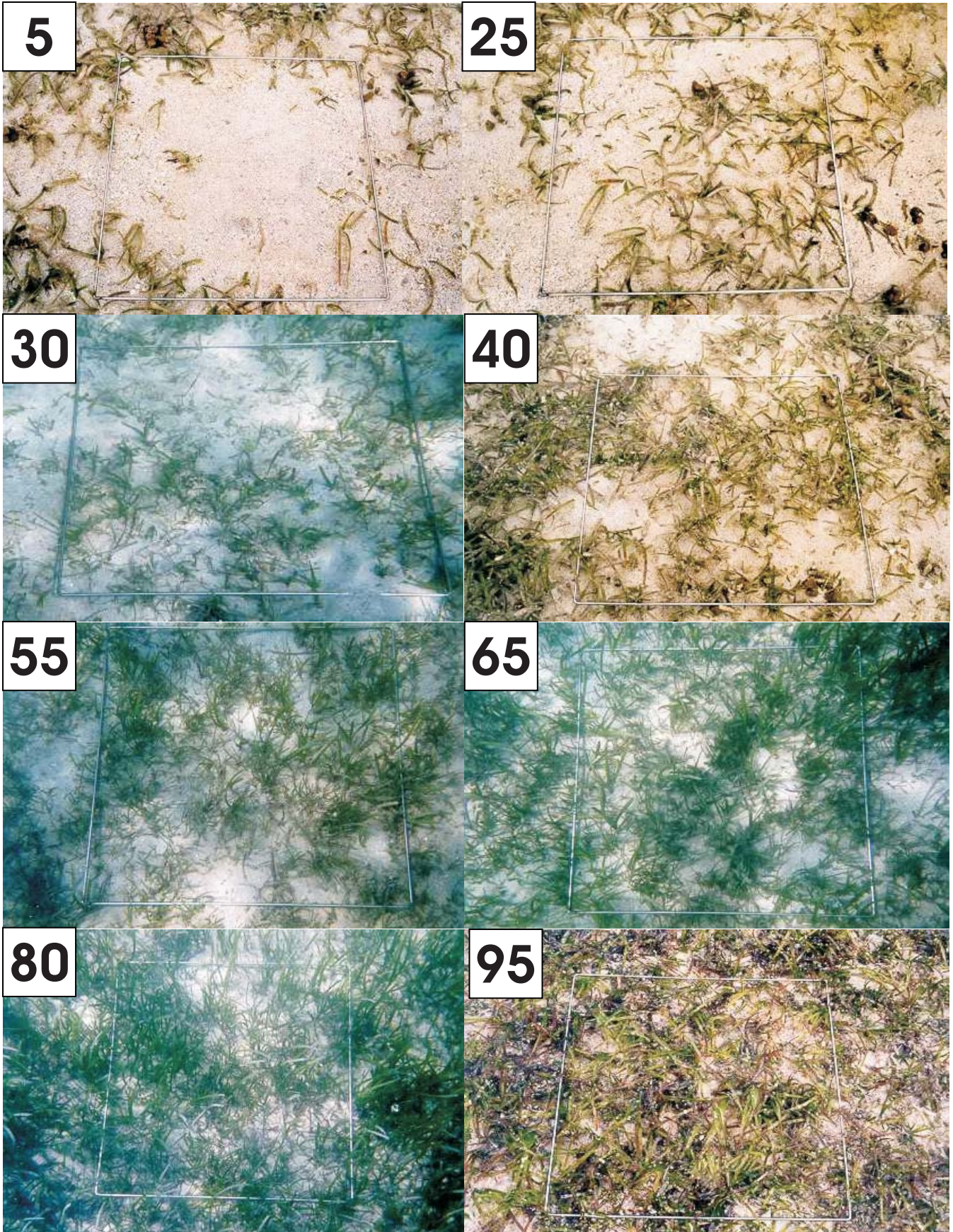


Seagrass Percentage Cover



SEAGRASS SPECIES CODES

Ho

Halophila ovalis

- 12 or more cross veins
- No hairs on leaf surface



Hm

Halophila minor

- Less than 12 pairs of cross veins
- Small oval leaf blade



Ea

Enhalus acoroides

- Very long ribbon-like leaves with inrolled leaf margins
- Thick rhizome with long black bristles and cord-like roots
- Leaves 30-150 cm long



Th

Thalassia hemprichii

- Short black bars of tannin cells on leaf
- Thick rhizome with scars between shoots
- "Sickle" shaped leaves
- Leaves 10-40 cm long



Hu

Halodule uninervis

- trident leaf tip
- 1 central vein
- Usually pale rhizome, with clean black leaf scars



Hp

Halodule pinifolia

- rounded leaf tip
- 1 central vein
- Usually pale rhizome, with clean black leaf scars



Cr

Cymodocea rotundata

- Rounded leaf tip
- Narrow leaf blade (2-4mm wide)
- Leaves 7-15 cm long
- 9-15 longitudinal veins
- Well developed leaf sheath



Cs

Cymodocea serrulata

- Serrated leaf tip
- Wide leaf blade (5-9mm wide)
- Leaves 6-15cm long
- 13-17 longitudinal veins



Si

Syringodium isoetifolium

- Cylindrical in cross section
- Leaf tip tapers to a point
- Leaves 7-30cm long



Tc

Thalassodendron ciliatum

- Erect stem up to 65cm long bearing leaf cluster
- Rhizome tough and woody
- Ribbon-like, sickle-shaped leaves with ligule
- Round, serrated leaf tip
- Often found attached to rock or coral substrate

