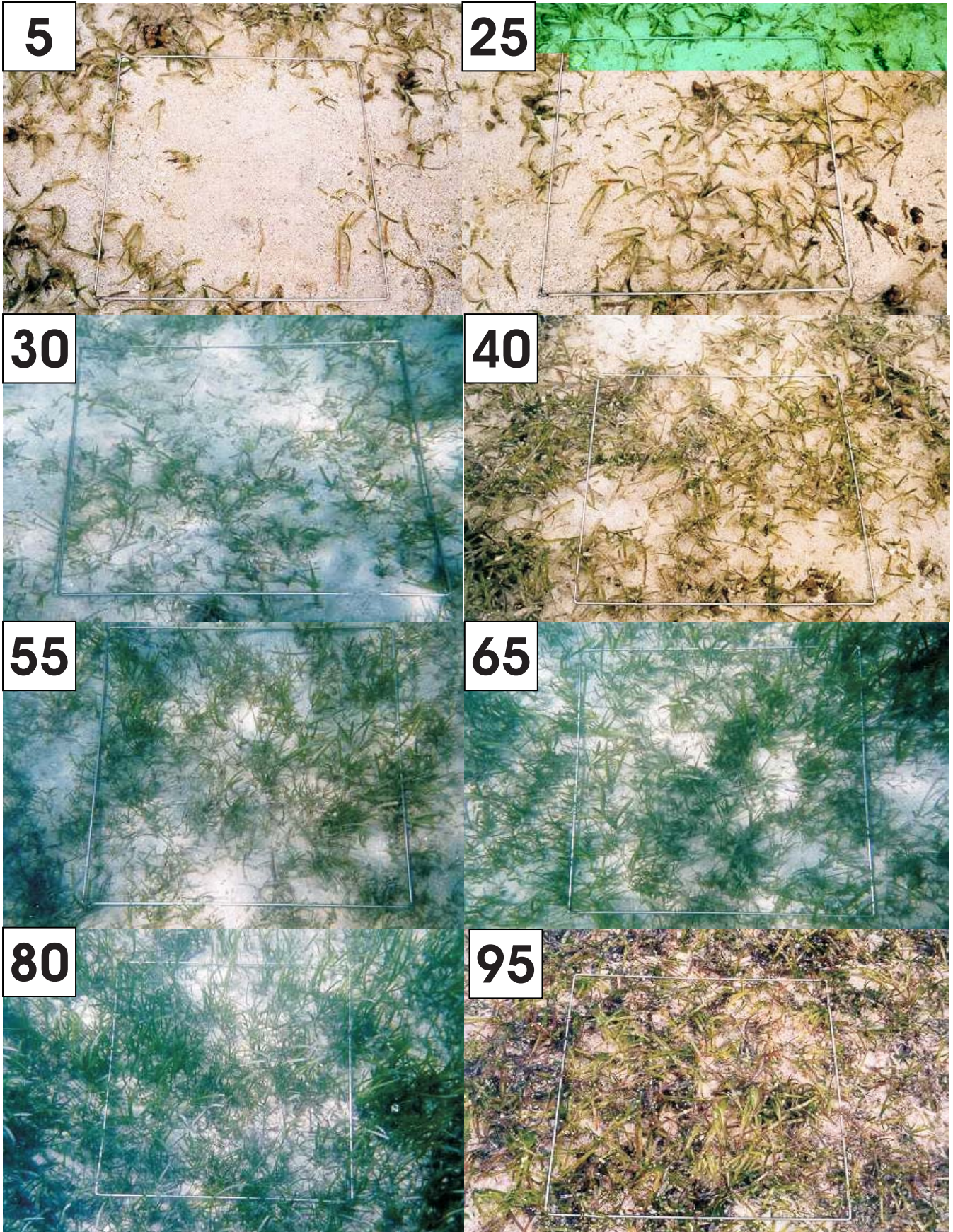


Seagrass Percentage Cover



SEAGRASS SPECIES CODES

Ho

Halophila ovalis

- Eight or more cross veins
- No hairs on leaf surface



Hu

Halodule uninervis

- trident leaf tip
- 1 central vein
- Usually pale rhizome, with clean black leaf scars



Si

Syringodium isoetifolium

- Cylindrical in cross section (e.g., spaghetti)
- Leaf tip tapers to a point
- Leaves 7-30cm long



Hp

Halodule pinifolia

- rounded leaf tip
- 1 central vein
- Usually pale rhizome, with clean black leaf

